

# Apply today...

Yes please contact me for my free network health check

Company Name.....

Contact Name.....

Job Title.....

Phone Number.....

Email Address.....

Fax back to 01226 750022

or

Call us today on 01226 752211

or

Simply Email us at:

[freeaudit@integral-networks.co.uk](mailto:freeaudit@integral-networks.co.uk)

Unit 9 Cortonwood Centre,  
Knollbeck Lane,  
Brampton Bierlow,  
Barnsley  
South Yorkshire  
S73 0TU

# Your Free Network Health Check



- ← Hubs & Switches
- ← Network Documentation
- ← Sample Testing
- ← Cabling Infrastructure
- ← Fibre & Voice backbones
- ← Communication Cabinet / Room

Enjoy a full analysis of your network infrastructure entirely without obligation



Integral Network Solutions

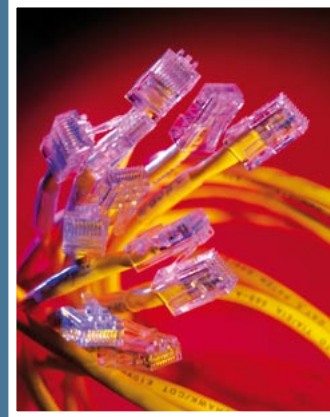
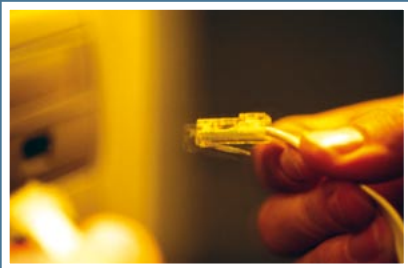
# Are you getting

## Peak Performance from your network

We believe that "prevention is better than the cure"

Keeping your network infrastructure in optimum condition can result in less downtime and increased productivity.

During your free 90-minute network audit, your network infrastructure will undergo a comprehensive visual health check to ensure you are benefiting from peak performance in terms of bandwidth and throughput speeds.



Your audit can be done, no matter how old or new your network infrastructure.

At the end of your free 90 minute session, you will enjoy a no-obligation written report on your network performance. Your report will contain results of any tests performed, any potential concerns you may need to consider and recommendations on how to solve those concerns.

If you are concerned about the performance of your network, or if you would simply like peace of mind regarding the efficiency of your current network infrastructure, book your no obligation network audit today - [FREE](#)

Your Network Health Check includes the following checks, with a diagnostic report and recommendations for each item, where applicable:

### Agenda & Initial Overview

- General consultation to discuss your infrastructure
- Perceived problem areas that you are encountering
- Agenda of Network Health Check

The initial consultation will allow us to get to know you and your network. We will discuss an overview of your network and any problems that you may be having, as well as potential future needs.

### Network Documentation

- Review of any documentation
- Review of Certified Test Results

Documentation is integral to any network, it allows for more accurate diagnostics and administration of your network so you can free your time to do what it is that you do best.

### Hubs and Switches

- Size, manufacturer, age and type
- Bandwidth requirements

Switches are becoming more cost effective in the market place. Just by replacing an existing hub alone you can improve your network throughput by 2000%

### Fibre & Voice Backbones

- General visual inspection
- Type and grade of backbone cables
- Bandwidth capacities

Many older fibres cannot handle the increasing demands for bandwidth, with some simple changes bandwidth speeds can be improved by a minimum of 10x's your existing bandwidth allowing data to flow more quickly around your network.

### Sample Testing

- Data Cable sample testing – Printout of results with diagnostic report
- Fibre Optic sample testing - Printout of results with diagnostic report

Not only do we visually check your infrastructure but we will also conduct some sample testing to see if your cabling is installed to industry standards and what to do if it is not. Compliance test results should be issued at the very least. Without these who knows what your network is doing without you knowing.

### Communications Cabinet / Room

- Earthing
- Patching & Patch Leads
- Labelling Scheme
- Cable Management
- Future Capacity

The weakest link of any network is the patch leads, if old or non-compliant patch leads are used these could reduce your network productivity down to 4% of its optimum.

### Cabling Infrastructure

- General Visual Inspection of entire infrastructure
- Component Mismatching

Are your components balanced and supplied by the same manufacturer? If not there is a lot of room for improving the 100's or even 1000's of repeat transmission and lost packets, slowing your network down to snail pace due to unbalancing and impedance mismatching.